

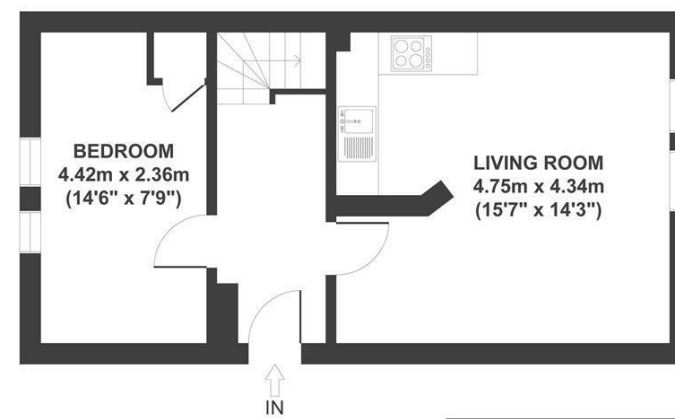
**Boardwalk**

# Somerset

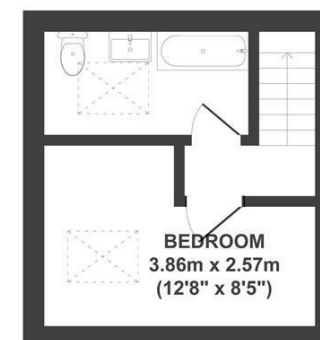
, BRISTOL

## Somerset Terrace BEDMINSTER

APPROXIMATE FLOOR AREA  
55 SQM / 592 SQFT



GROUND FLOOR



FIRST FLOOR

Boardwalk

# Somerset

, BRISTOL



£285,000



BS3 4LJ



2 Bedrooms



1 Bathrooms

*"We've loved life on top of the hill — family walks in Victoria Park, evenings at The Rising Sun, and trips to the city farm. The community here in BS3 is truly special"*

